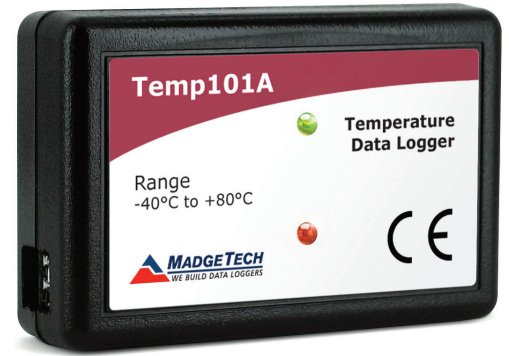


Temp101A

Temperature Data Logger

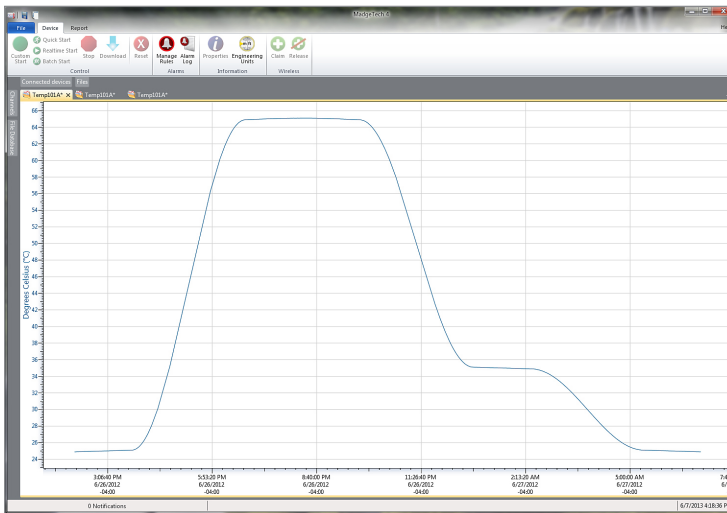


The Temp101A is second to none in the compact, portable and low cost data logger class. This device can measure and record ambient temperature from -40 °C to 80 °C (-40 °F to +176 °F) and is approximately the size of a matchbox which allows for easy placement even in tight spaces.

The Temp101A features a pushbutton start/stop on the device or can be configured to start and stop using the MadgeTech Data Logger Software, with the ability to schedule a delayed start up to eighteen months in advance. These features combined with the ability to store over 2,000,000 readings makes the Temp101A the ideal solution for long term temperature deployment and monitoring cycles.

Some common applications for the Temp101A include but are not limited to cold chain and shipping applications, warehouse and facility mapping, HVAC or refrigerator and freezer monitoring.

MadgeTech 4 Software Features



Graph View

- Multiple graph overlay
- Statistics
- Digital calibration
- Zoom in/ zoom out
- Lethality equations (F0, PU)
- Mean Kinetic Temperature
- Full time zone support
- Data annotation
- Min./Max./Average lines
- Summary view

Features

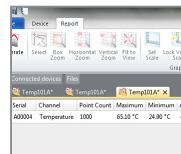
- 10 Year Battery Life
- ±0.5 °C (±0.9 °F) Accuracy
- Multiple Start/Stop Function
- Ultra High Speed Download
- 2,095,104 Reading Storage Capacity
- Memory Wrap
- Precision RTD Sensing Element
- Battery Life Indicator
- Optional Password Protection
- Programmable High and Low Alarms
- Field Upgradeable

Benefits

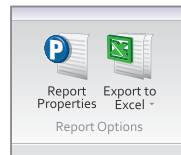
- Simple Setup and Installation
- Minimal Long-Term Maintenance
- Long-Term Field Deployment

Applications

- Cold Chain
- Refrigerator and Freezer Monitoring
- Vaccine Monitoring
- Warehouse Mapping
- HVAC
- General Purpose Temperature Recording



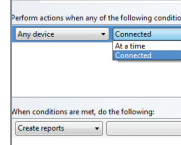
Statistics



Export to Excel

Time	Time Zone	Data
1:13:37 PM	-0400	-05:00:00
1:14:37 PM	-0400	-05:01:00
1:15:37 PM	-0400	-05:02:00
1:16:37 PM	-0400	-05:03:00
1:17:37 PM	-0400	-05:04:00
1:18:37 PM	-0400	-05:05:00
1:19:37 PM	-0400	-05:06:00
1:20:37 PM	-0400	-05:07:00
1:21:37 PM	-0400	-05:08:00
1:22:37 PM	-0400	-05:09:00
1:23:37 PM	-0400	-05:10:00
1:24:37 PM	-0400	-05:11:00
1:25:37 PM	-0400	-05:12:00
1:26:37 PM	-0400	-05:13:00
1:27:37 PM	-0400	-05:14:00
1:28:37 PM	-0400	-05:15:00

Tabular Data View



Automation

SPECIFICATIONS

Specifications are subject to change without notice. Specific warranty remedy limitations apply. Call (603) 456-2011 or go to madgetech.com for details.

TEMPERATURE		GENERAL	
Temperature Sensor	Precision RTD Element	Start Modes	Immediate start Delay start up to 18 months Multiple pushbutton start/stop
Temperature Range	-40 °C to +80 °C (-40 °F to +176 °F)	Stop Modes	Manual through software Timed (specific date and time)
Temperature Resolution	0.01 °C (0.02 °F)	Multiple Start/Stop Mode	Start and stop the device multiple times without having to download data or communicate with a PC
Calibrated Accuracy	±0.5 °C (±0.9 °F) from -5 °C to +55 °C (+23 °F to +131 °F) ±1.0 °C (±1.8 °F) from -40 °C to -5.01 °C (-40 °F to +22.9 °F) and +55.01 °C to +80 °C (+131.01 °F to +176 °F)	Real Time Recording	May be used with PC to monitor and record data in real time
		Password Protection	An optional password may be programmed into the device to restrict access to configuration options. Data may be read out without the password.
		Memory	2,095,104 readings; software configurable memory wrap 698,368 readings in multiple start/stop mode
		Wrap Around	Yes
		Reading Rate	1 reading every second up to 1 reading every 24 hours
		Alarm	Programmable high and low limits; alarm is activated when temperature reaches or exceeds set limits
		LEDs	2 status LEDs
		Calibration	Digital calibration through software
		Calibration Date	Automatically recorded within device
		Battery Type	3.6V lithium battery included; user replaceable
		Battery Life	10 years typical at a 15 minute reading rate
		Data Format	Date and time stamped °C, K, °F or °R
		Time Accuracy	±1 minute/month at 25 °C (77 °F) (Stand alone mode)
		Computer Interface	USB (interface cable required); 115,200 baud
		Operating System Compatibility	Windows XP SP3 or later
		Software Compatibility	Standard Software version 2.03.06 or later Secure Software version 4.1.3.0 or later
		Operating Environment	-40 °C to +80 °C (-40 °F to +176 °F) 0 %RH to 95 %RH non-condensing
		Dimensions	1.4 in x 2.1 in x 0.6 in (35 mm x 54 mm x 15 mm)
		Weight	0.8 oz (24 g)
		Material	Polycarbonate
		Approvals	CE

BATTERY WARNING: FIRE, EXPLOSION AND SEVERE BURN HAZARD. DO NOT RECHARGE, DISASSEMBLE, HEAT ABOVE 100 °C (212 °F), INCINERATE, CRUSH, OR EXPOSE CONTENTS TO WATER.

Ordering Information

Temp101A	PN 901678-00	Temperature Data Logger
IFC200	PN 900298-00	USB interface cable
LTC-7PN	PN 900352-00	Replacement battery for the Temp101A

For Quantity Discounts call (603) 456-2011 or email sales@madgetech.com